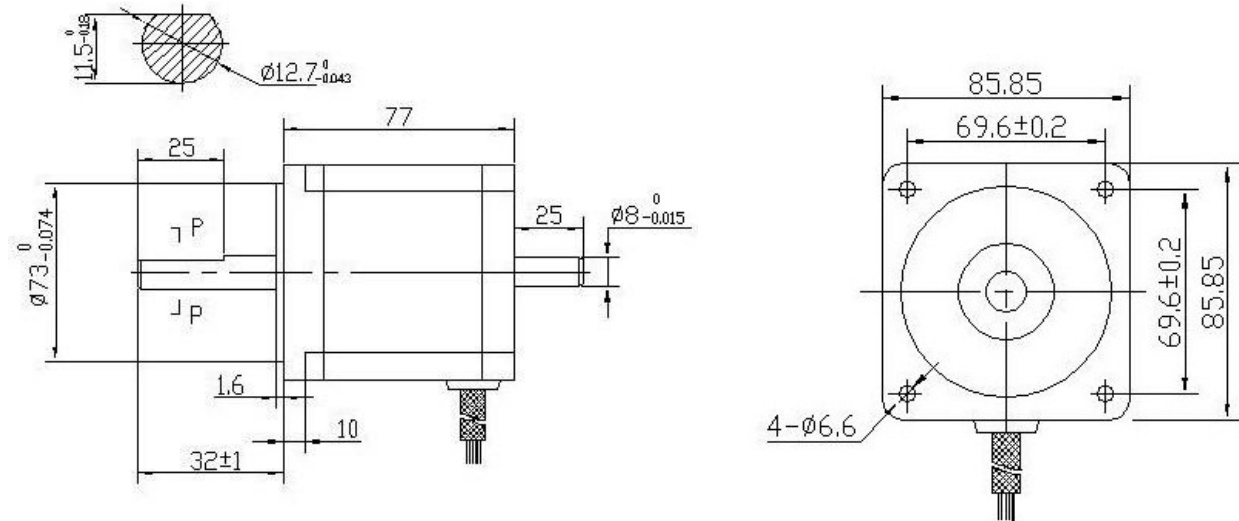


Hybrid Stepper Motor 86BYGH450BD

Mechanical Dimensions:



Electrical Specifications:

	Unipolar	Bipolar Serial	Bipolar Parallel
No. of Phases	4	2	2
Step Angle	$1.8 \pm 0.09^\circ$		
Rated Voltage (V)	3,2	4,53	2,26
Current (A)	4,2	2,95	5,9
Resistance (Ω)	0,75	1,5	0,38
Inductance (mH)	3,5	14	3,5
Holding Torque (Nm)	3,9	5,5	5,5
Rotor Inertia (kgcm ²)	1,7		
Insulation Class	B		
Weight (kg)	2,2		