

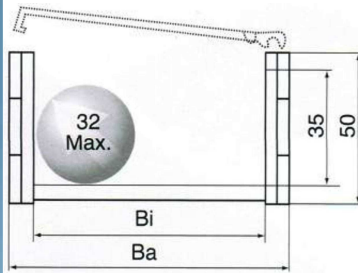
# Drag Chain WN35-75, open version, swivel cover at the outer side Schleppkette WN35-75, offene Bauart, Schwenkabdeckung außen

Drag chain WN35-75 can be easily opened and closed for insertion of cables with swivel-type cover elements.

Die Schleppkette WN35-75 lässt sich für Kabeleinführung einfach öffnen und schließen durch schwenkbare Abdeckelemente.



**Dimensions in mm:**

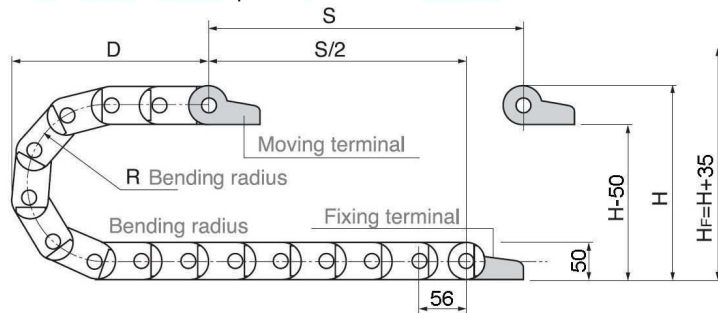


Dimensions can deviate up to 1 mm.

**Abmessungen in mm:**

Version	-75				
B <sub>a</sub> :	93				
B <sub>i</sub> :	72				
B:	55				
R:	Standard 75, optional 150				
H:	= 2 x R + 50 mm				
H <sub>F</sub> :	= H + 35 mm				
K:	= π x R + safety ratio				

Maße können bis zu 1 mm abweichen.

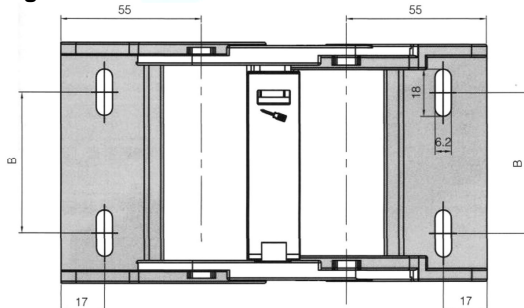


Segments per m: 18

Segmente pro m: 18

End segments:

Endstücke:



**WN35-oES**  
 (outer end segment complete)  
 (äußeres Endstück komplett)

**WN35-iES**  
 (inner end segment complete)  
 (inneres Endstück komplett)

Calculation of drag chain dimensions (length):

Berechnung der Schleppkettendimensionierung (Länge):

$L = S/2 + K$

L = Length

L = Länge

S = Stroke

S = Fahrweg

D = Distance in final position

D = Maß in Endposition

$K = \pi \times R + \text{safety ratio}$

$K = \pi \times R + \text{Sicherheit}$

H<sub>F</sub> = required clearance

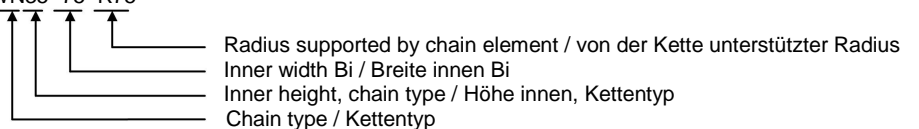
H<sub>F</sub> = erforderliche Einbauhöhe

H<sub>F</sub> = H + 35 mm

R	75	150		
H	200	350		
D	150	225		
K	375	650		

**Order information: Bestellinformation:**

WN35- 75 R75



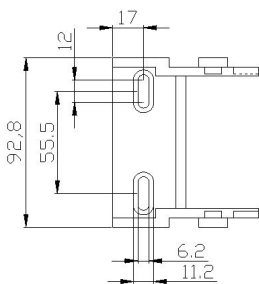
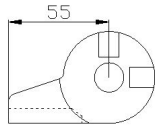
# Drag Chain WN35-75, open version, swivel cover at the outer side Schleppkette WN35-75, offene Bauart, Schwenkabdeckung außen

**Single part drawings:**

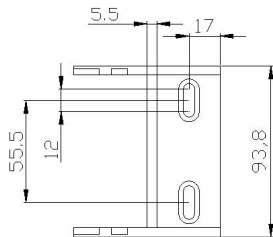
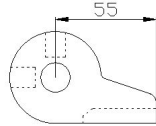
**Einzelteilzeichnungen:**

**Mounting options: Montageoptionen:**

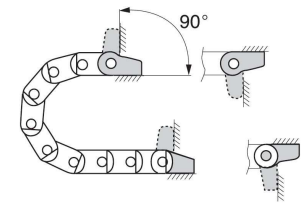
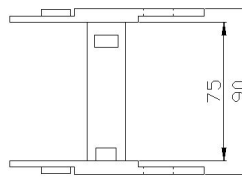
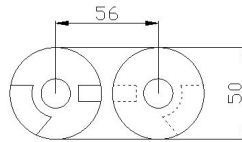
**Inner end segment**



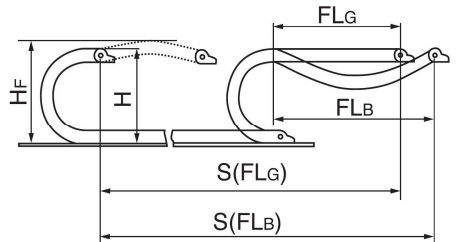
**Outer end segment**



**Element**



Unsupported horizontal length:  
 Freitragende horizontale Länge:

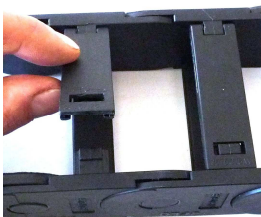


FLG: with straight upper part  
 mit geradem Oberteil

FLB: with permitted deflection  
 mit erlaubter Durchbiegung

**Instructions for mounting:**

1. Cross bracing separation:  
 Steg abnehmen:



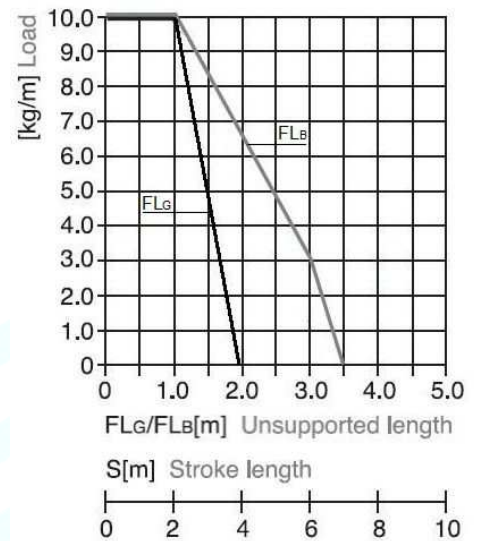
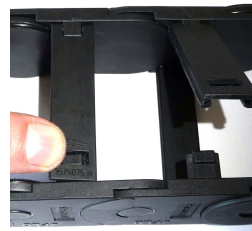
**Montagehinweise:**

2. Element separation:  
 Elemente trennen:



Chain needs to be bent slightly!  
 Kette muß leicht abgknickt sein!

3. Assembling:  
 Zusammenfügen:



**Accessories:**



Shim part for vertical splitting

Trennsteg für vertikale Aufteilung

**Zubehör:**



**Strain relief comb part**, 7 teeth, width 75 mm, fixation hole distance 55 mm, for 6 mm countersunk screws.

**Zugentlastungskamm**, 7 Zähne, Breite 75 mm, Lochabstand Befestigungsbohrungen 55 mm, für 6 mm Senkschrauben.

**Sample application: Anwendungsbeispiel:**

